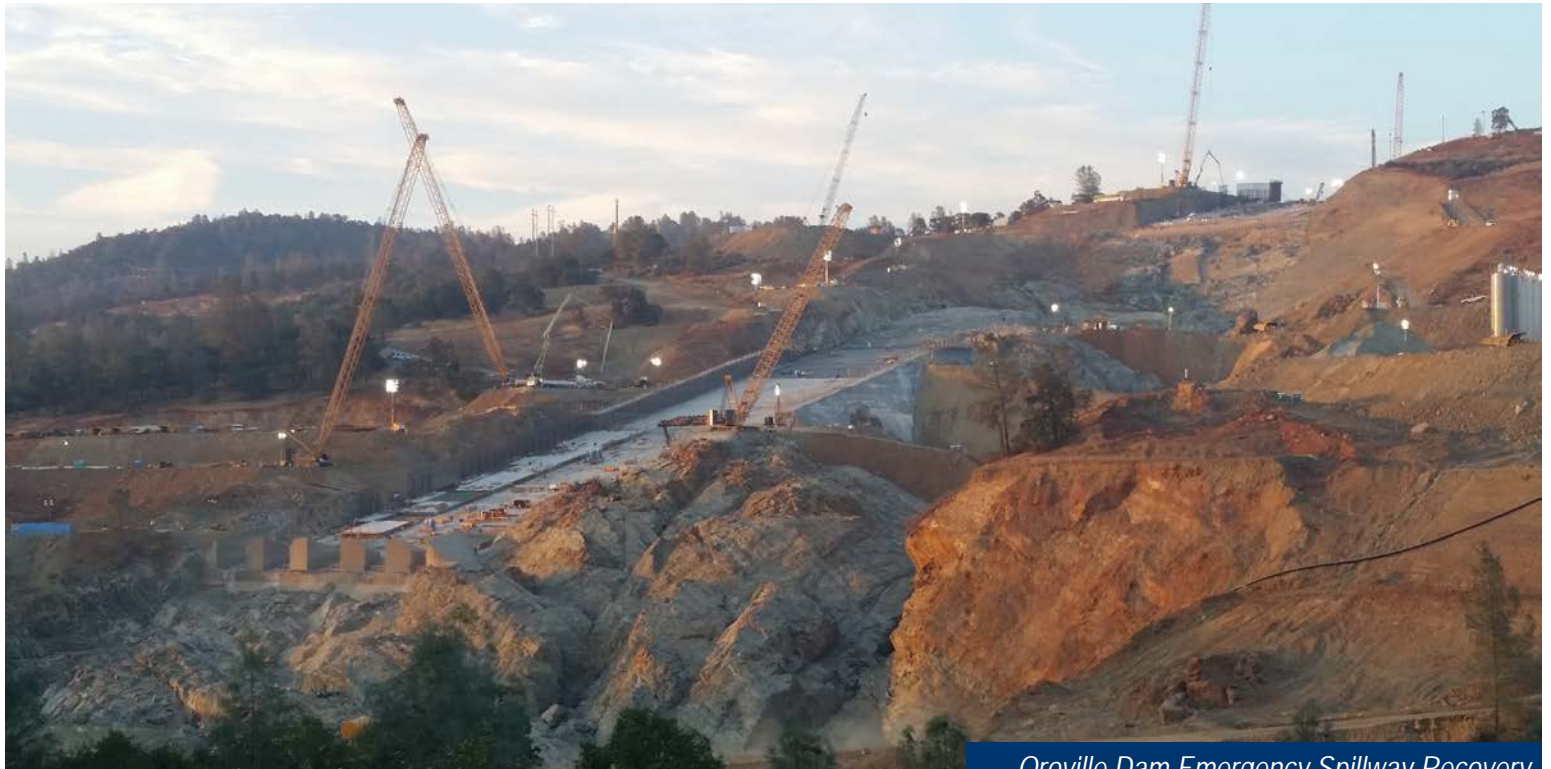




Shaping Today, Building Tomorrow



Oroville Dam Emergency Spillway Recovery

About Us

Established in San Diego in 1986, Ninyo & Moore is one of the largest engineering firms specializing in Geotechnical Engineering, Environmental Engineering, and Materials Testing and Inspection Services.

Our staff of 500 professionals are employed across 16 offices located in the western United States, including California, Arizona, Nevada, Colorado, Utah, and Texas.

We believe the success of our firm is in large part due to the success of our personnel. Employees are provided with opportunities to advance and explore their potential through education, professional associations, and mentoring.

Headquarters

5710 Ruffin Road
San Diego, California 92123

@ www.ninyoandmoore.com

 800.427.0401

 nminquiries@ninyoandmoore.com

Benefits



Competitive pay
Performance incentives
401(k) Plan (matching funds ↑6%)



10 days paid vacation/year
5 days paid sick leave/year
8 paid holidays/year



Medical & Dental Insurance
Life Insurance
Vision Insurance

Follow us





Our Work



Port of San Diego Sweetwater Promenade (California)



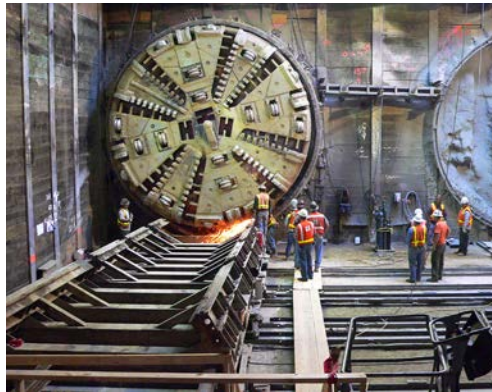
Port of Houston Clinton Terminal Concrete Silo Slip (Texas)



Fulfillment Warehouses (California, Arizona, Nevada)



City of South San Francisco Civic Complex (California)



LA Metro Regional Connector (California)



Mount Soledad Landslide (California)



The Fitzgerald (Colorado)



Tempe Town Lake Dam (Arizona)



Hunter Solar (Utah)

Contact Our Recruiter

Joy Velarde (*Employment*)
nmcareers@ninyoandmoore.com



Geotechnical engineering & geology



Environmental consulting



Construction

Career Opportunities

